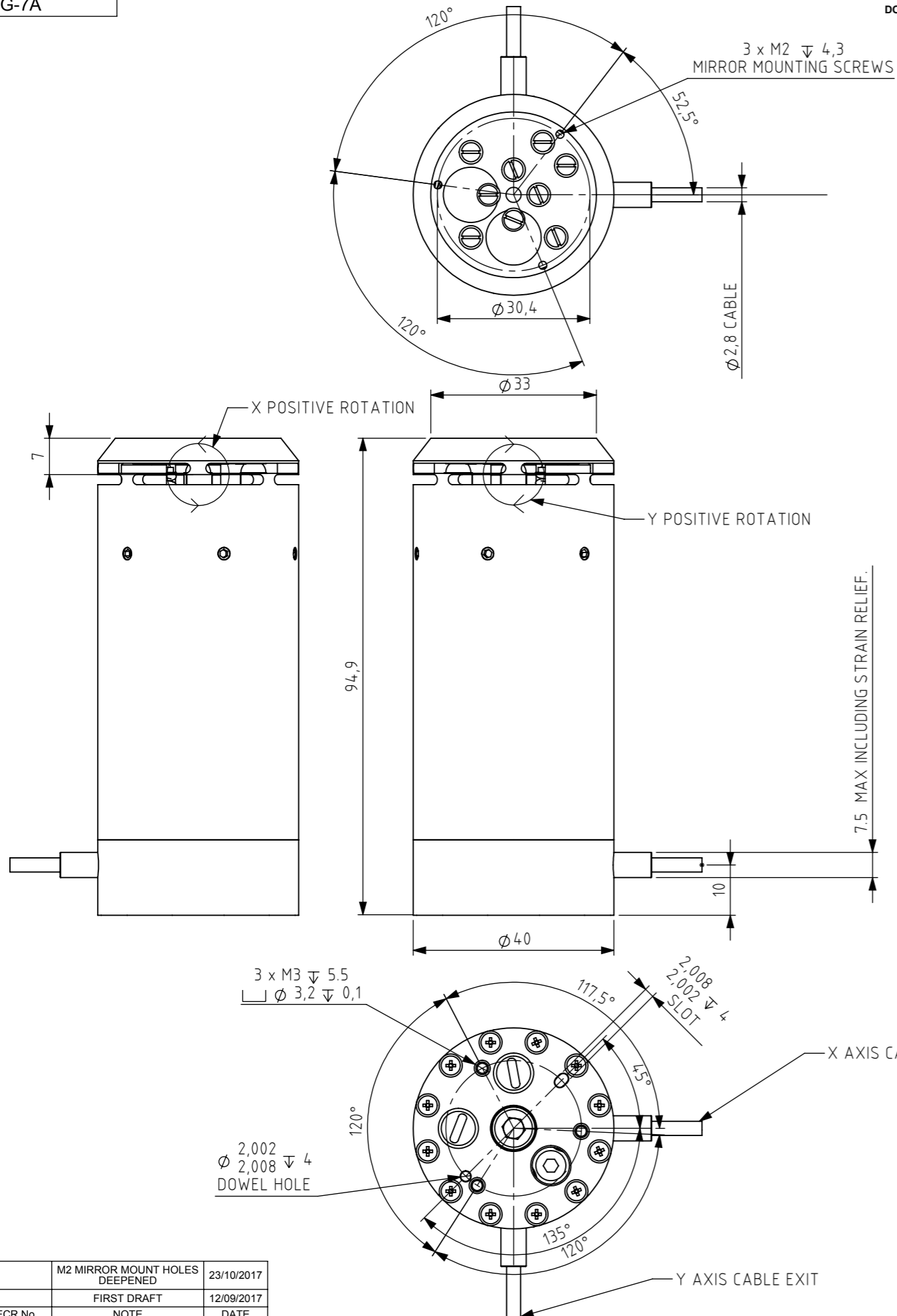


Used on  
NPS-TG-7A

DO NOT SCALE DRAWING



NOTES

- THREE M3 MOUNTING SCREWS TWO 2mm DOWELS CAN BE USED TO LOCATE AND SECURE BASE. TORQUE M3 SCREWS TO 50CNM MAX.
- THE BODY CAN BE LIGHTLY SUPPORTED/CLAMPED ALONG ITS LENGTH TO GIVE THE BEST DYNAMIC PERFORMANCE/STABILITY. THE TOP 25mm MUST BE CLEAR FROM SUPPORT.
- THREE M2 MOUNTING SCREWS CAN BE USED TO SECURE A MIRROR WITH THE ADDITION OF A CLAMPING RING ACCESSORY. TORQUE M2 SCREWS TO A 12CNM MAX.
- A MIRROR MAY ALSO BE BONDED IN PLACE. IF MECHANISM DAMAGE SHOULD OCCUR ON DEBONDING THIS WOULD BE OUTSIDE OF WARRANTY.
- STAGE CABLE LENGTH IS 2m STANDARD, 14mm MAX BEND RADIUS, WITH A 17W2 D TYPE CONNECTOR. DO NOT CUSTOMISE CABLING AS THIS WILL AFFECT STAGE CALIBRATION. CALIBRATION SETTINGS ARE STORED WITHIN STAGE CONNECTORS. THE STAGE CABLE SHOULD NOT RUN NEXT TO HEAT SOURCES OR MAINS CABLES. THE CABLE MUST NOT BE DEFORMED BY SUPPORTS OR CLAMPS. THE CABLE MUST NOT BE BENT BEYOND THE MAX BEND RADIUS (28mm). THE UNITS MUST NOT BE LIFTED UP BY THEIR CABLE.
- IF A TOO FAST TUNING SETTING IS SELECTED OR THE PID SETTING IS ADJUSTED, IT IS POSSIBLE THAT THE STAGE CAN GO UNSTABLE. PLEASE POWER DOWN OR RETURN SETTING TO A SLOWER SETTING AS SOON AS POSSIBLE TO AVOID CAUSING STAGE DAMAGE. WHERE POSSIBLE LET QUEENSGATE KNOW STAGE LOAD SO THAT TUNING CAN BE OPTIMISED TO GIVE BEST DYNAMIC PERFORMANCE WITH THAT LOAD.
- THE STAGE HAS 8 TUNING SLOTS, SLOW, MEDIUM, FAST, C1, C2, C3, C4 AND C5. SLOW MEDIUM AND FAST ARE ALWAYS PRE-SET, C1, C2, C3, C4, C5 ARE ADJUSTABLE SETTINGS THAT CAN BE PROGRAMED. OR MAY BE USED FOR ADDITIONAL FACTORY SETTINGS STORED. SLOW SETTINGS GIVE BEST RESOLUTION, FASTER SETTINGS GIVE BEST DYNAMIC PERFORMANCE.
- SCREWS USED WITHIN THE STAGE ASSEMBLY MUST NOT BE LOOSENED OR REMOVED.
- DO NOT PUT OBJECTS IN FLEXURE SLOTS RISK OF ELECTROCUTION AND PRODUCT DAMAGE.
- MAX LOAD 70 GRAMS, FOR LARGER LOADS PLEASE SPEAK WITH QUEENSGATE, AS CUSTOM TUNING MAY BE REQUIRED.
- MIRROR MOUNT BRACKET, USES 3 x M2 SCREWS, SCREW LENGTH AND SPRING WASHERS SHOULD BE ADJUSTED TO MAINTAIN CLAPING PRESSURE ON MIRROR. SCREW MUST BE ENGAGED >3.5MM, MAX TORQUE 10CNM.

STAGE MASS: 550 GRAM (EXCLUDES CABLES)  
 ESTIMATED PLATFORM MASS: 40 GRAMS  
 ESTIMATED MOVING PART MASS: 58 GRAMS  
 ESTIMATED PLATFORM MOMENT OF INERTIA IXX & IYY: 3710 GRAMS x SQ MM  
 ESTIMATED MOVING PART MOMENT OF INERTIA IXX & IYY: 14740 GRAMS x SQ MM

1	M2 MIRROR MOUNT HOLES DEEPENED	23/10/2017
A	FIRST DRAFT	12/09/2017
ISSUE	ECR No.	NOTE
THIS DRAWING UNLESS OTHERWISE STATED SHALL ADHERE TO: BS 8888:2013 SIZE ISO 14405(E) ALL DIMENSIONS IN MILLIMETERS		
RoHS COMPLIANT: YES		

COPYRIGHT © 2017 ELEKTRON TECHNOLOGY UK LTD.  
 ALL RIGHTS RESERVED, NO UNAUTHORISED DUPLICATION OR MANUFACTURE PERMITTED

 Elektron Technology UK Ltd Broers Building JJ Thomson Avenue Cambridge CB3 0FA United Kingdom www.elektron-technology.com	GENERAL TOLERANCES UNLESS OTHERWISE STATED: X. ± 0.50mm X.X ± 0.20mm X.XX ± 0.1mm X.XXX ± 0.05mm ANGULAR ± 0.5°	Drawing no. <b>QG-0185-IN-100002</b> Title / Description <b>NPS-θy-7A Tip Tilt 5mrad Invar 36</b>	Issue <b>1</b> Date issue created <b>24-Oct-2017</b>	
		Material INVAR 36 HOUSING	Finish CLEAN	
	Issue created by <b>JC</b>	Approved by <b>AR</b>	Scale <b>1:1</b>	Sheet size <b>A3</b>
			Sheet no. <b>Sheet 1 OF 1</b>	